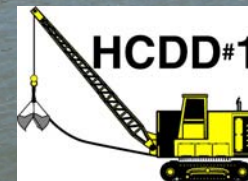


***“ROLE / FUNCTION OF A DRAINAGE DISTRICT
AND IMPORTANCE OF REGIONAL PLANNING”***

Godfrey Garza, Jr., District Manager
Hidalgo County
Drainage District No. 1



October 30, 2010

HISTORY / BACKGROUND OF HCDD1



- **Created April 9, 1908 by Commissioner's Court**
- **Originally organized under Article III, Section 52 of the Constitution of Texas; later converted to Conservation / Reclamation District under Section 59.**
- **Hidalgo County Drainage District No. 2 was created in 1968, but in 1975, an election was held, and it was incorporated into HCDD1.**

HISTORY / BACKGROUND OF HCDD1



- **HCDD1 is governed by a Board of Directors, whose members are actually the Commissioner's Court of Hidalgo County.**

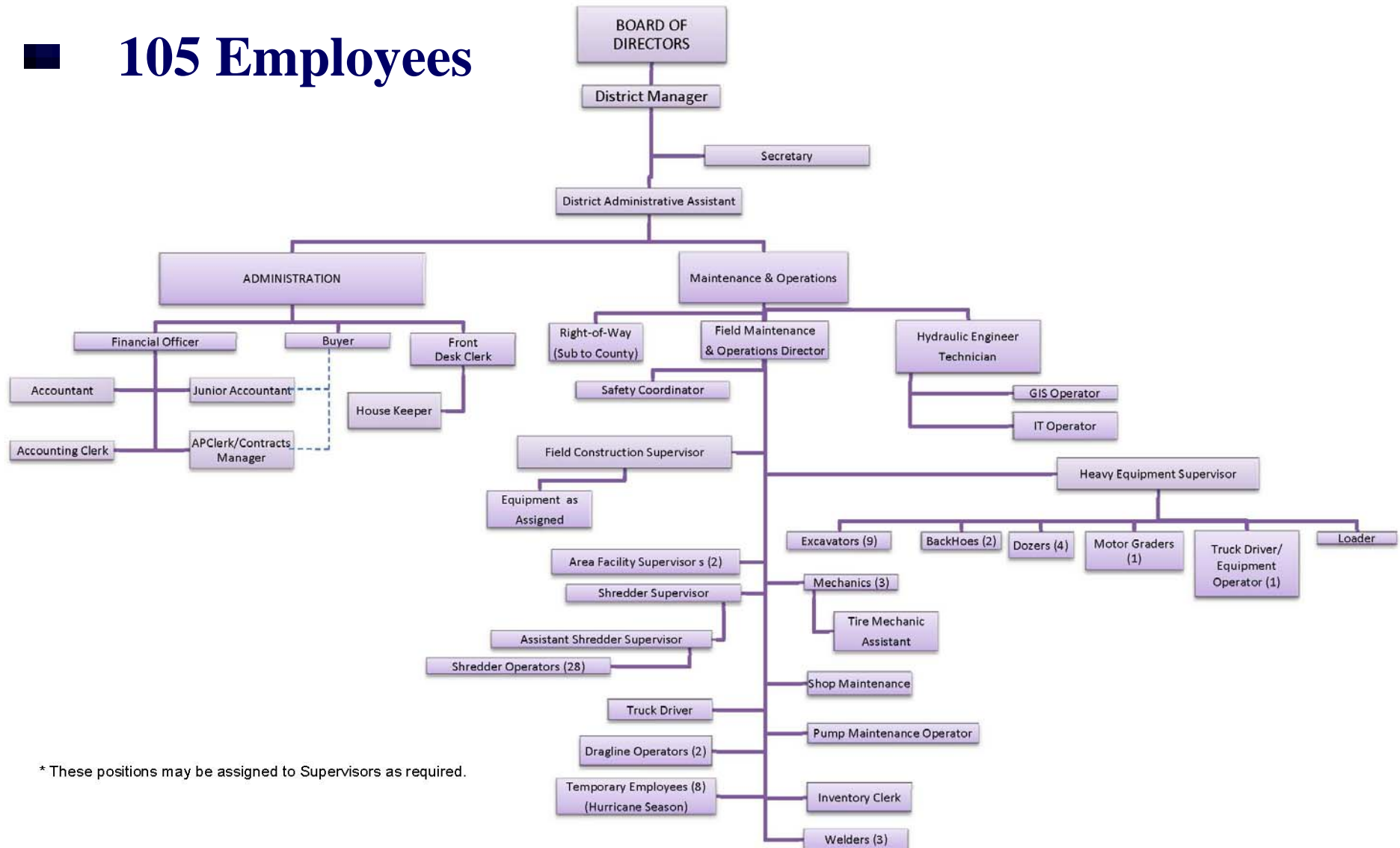
HCDD1 BOARD OF DIRECTORS

County Judge Rene A. Ramirez, Chairman of the Board
Commissioner A.C. Cuellar, Precinct 1, Member
Commissioner Hector "Tito" Palacios, Precinct 2, Member
Commissioner Joe Flores, Precinct 3, Member
Commissioner Oscar Garza, Precinct 4, Member

HCDD1 ORGANIZATION



■ 105 Employees

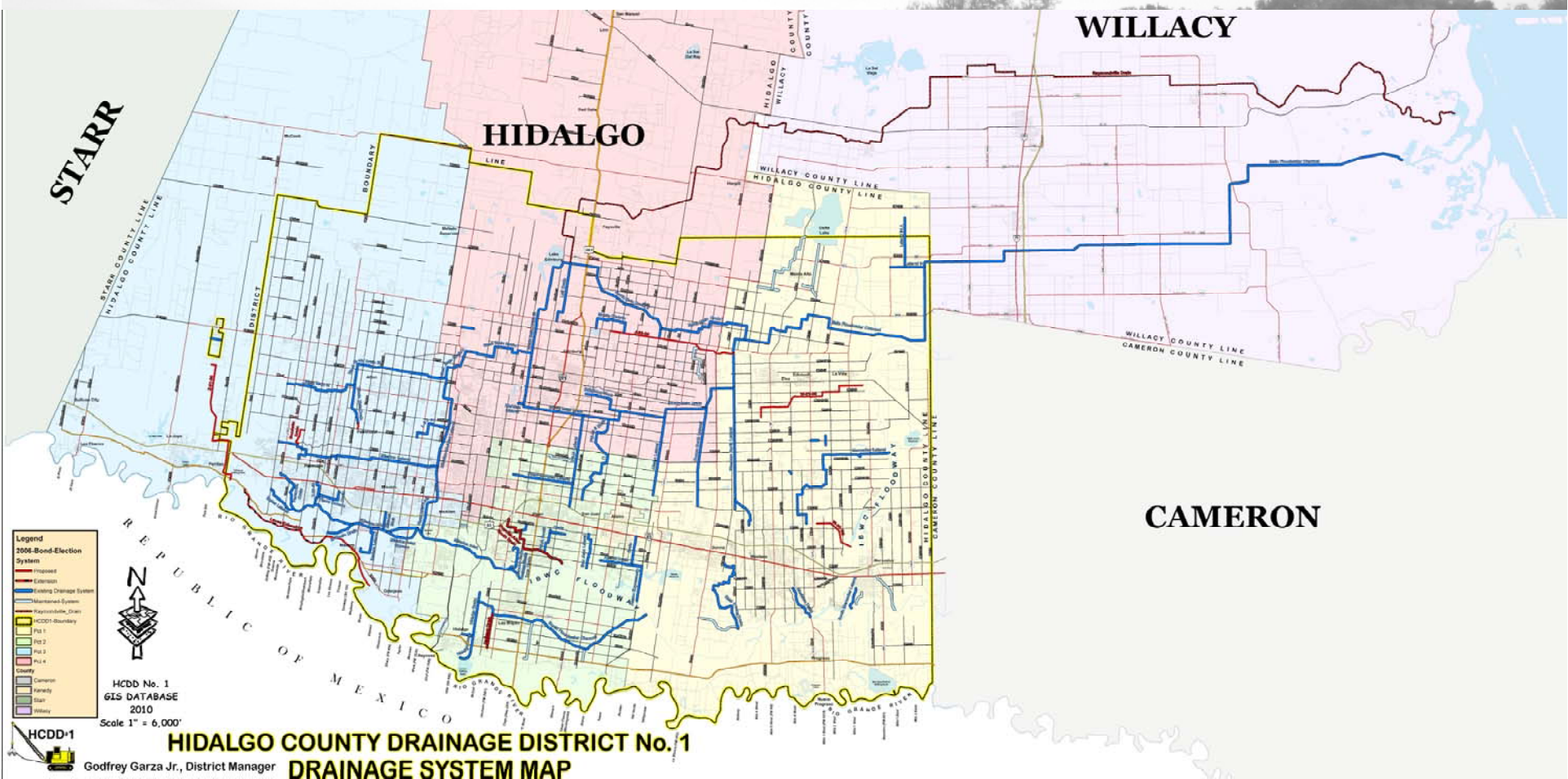


* These positions may be assigned to Supervisors as required.



HCDD1 BOUNDARY / SYSTEM

■ HCDD1 maintains approx 260 linear miles of ditches.



CHALLENGES / ISSUES

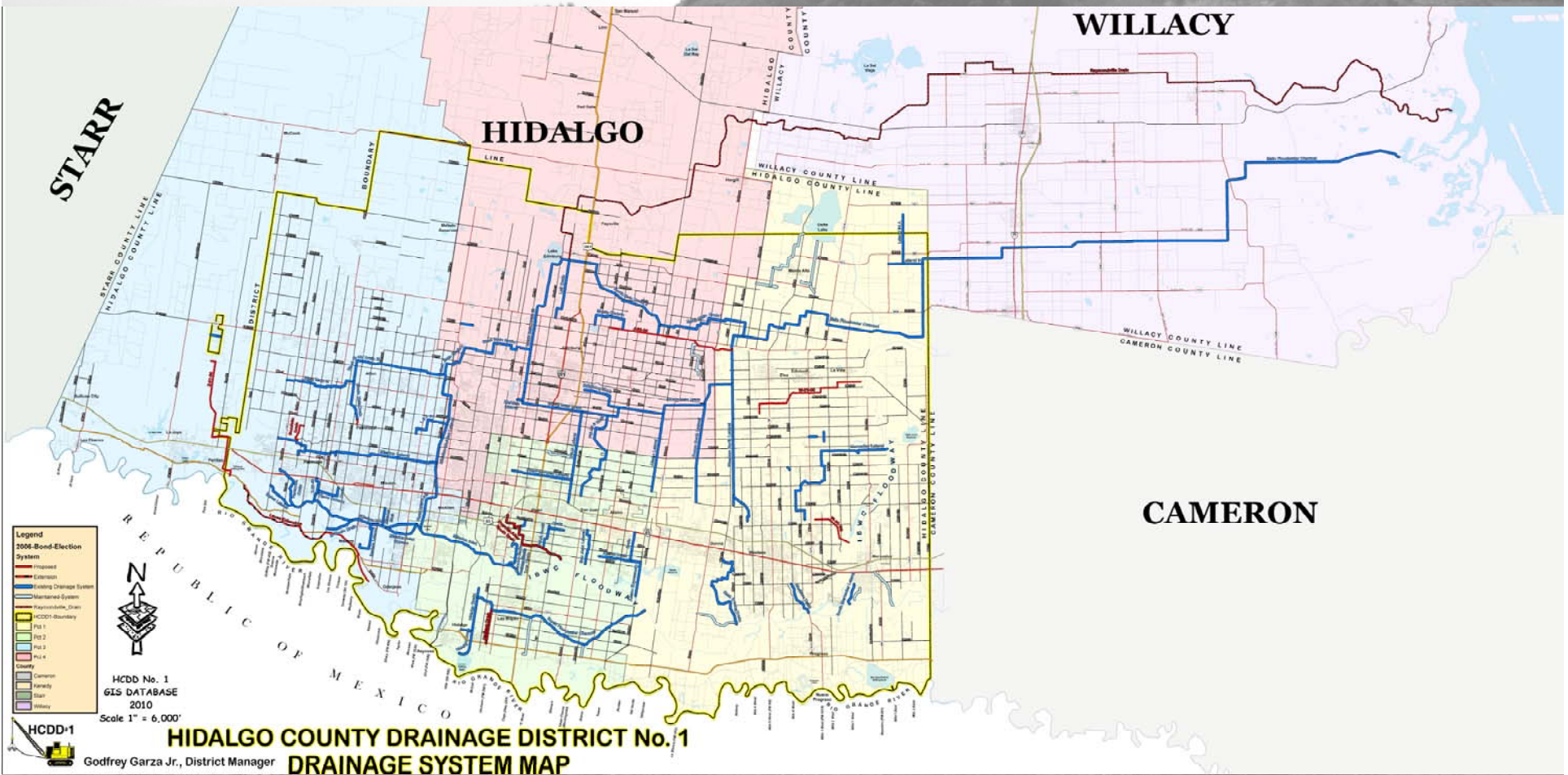


- **HCDD1 drainage system supports approximately 1,180 sq.miles.**
- **Originally designed for agricultural / rural run-off.**
- **No longer applicable to current land use conditions.**
- **For the past 13 years, have developed a plan to move the HCDD1 drainage system from agricultural to urban.**
- **No. 1 Challenge is Funding.**

FUNDING



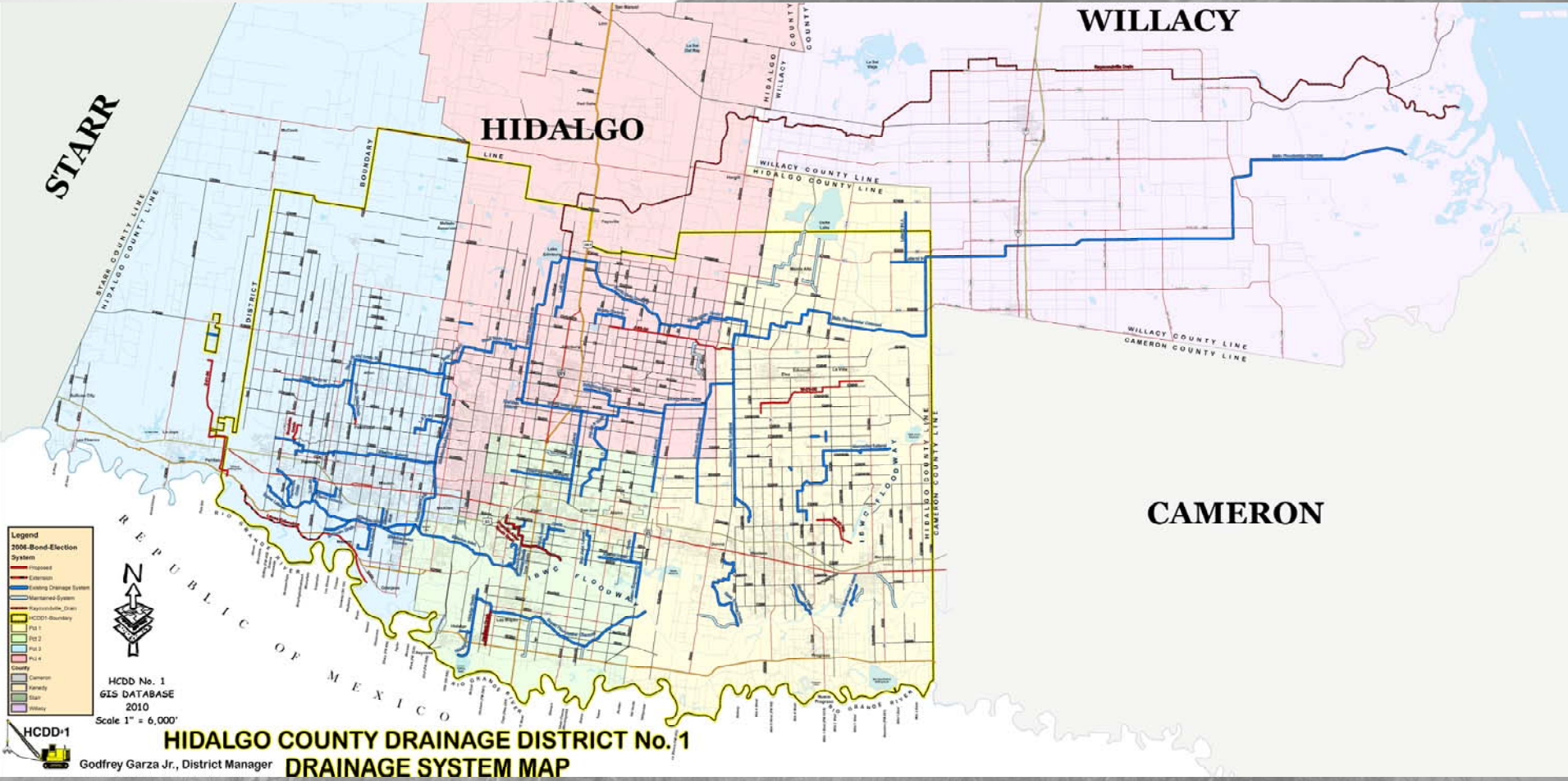
- Original Bond \$75 Million (1979~1985);
ditches shown in blue below.





FUNDING

- Recent Bond \$100 Million (2006);
ditches shown in red below.



WATERSHED MANAGEMENT STRATEGY

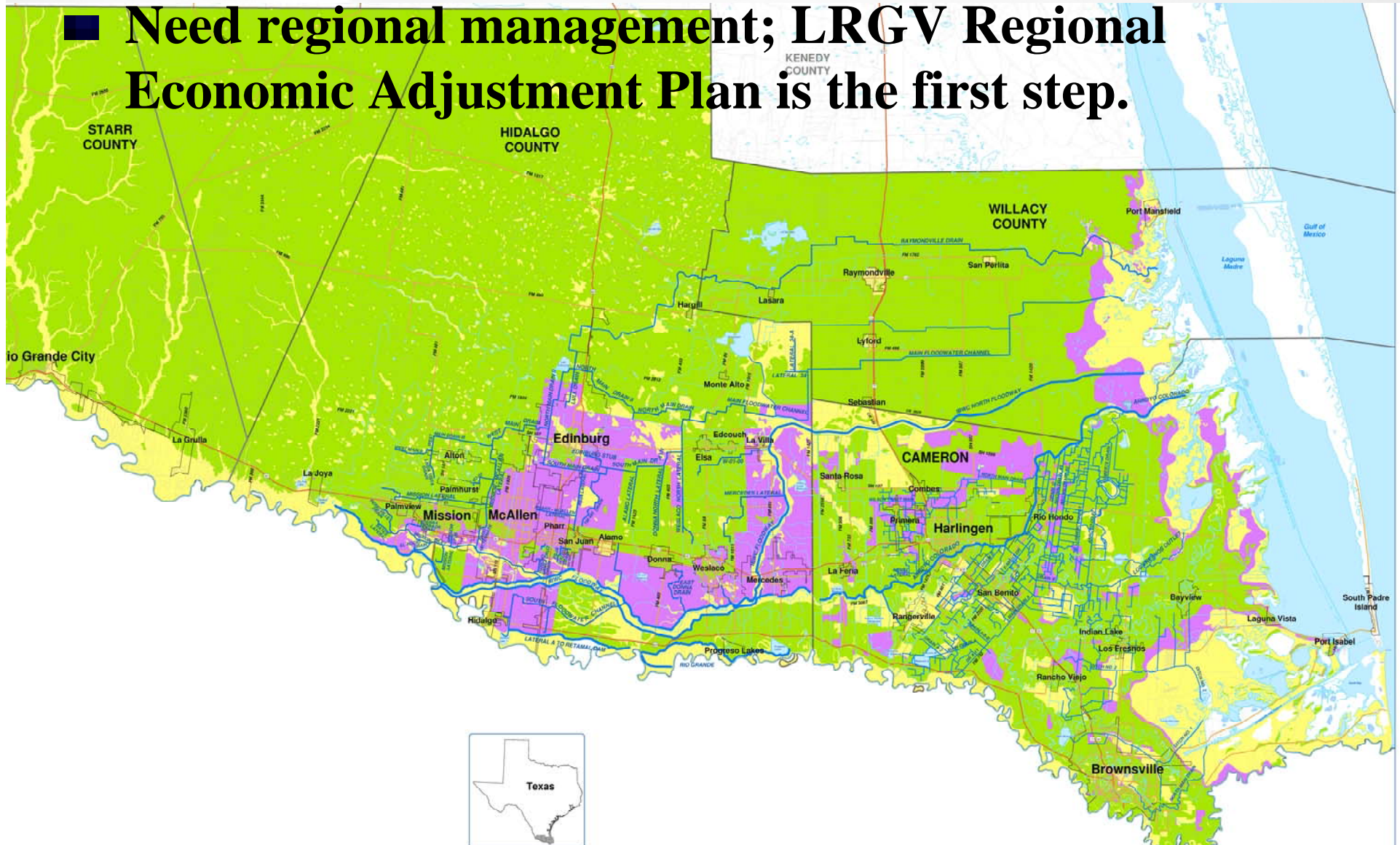


- **HCDD1 has had an Interlocal Agreement with Willacy County for 30+ years.**
- **Additionally, the HCDD1 Board has approved a plan to ultimately take-on all irrigation drain ditches.**

WATERSHED MANAGEMENT STRATEGY



■ **Need regional management; LRGV Regional Economic Adjustment Plan is the first step.**



Hidalgo County Drainage District No. 1

