

LOWER RIO GRANDE VALLEY DEVELOPMENT COUNCIL



PUBLIC WORKSHOP

The development of the

“Regional Economic Adjustment Plan for Building Disaster Resilient Communities”

EDA Grant Number 08-79-04390

By:



October 30, 2010



PROJECT OVERVIEW - PRIMARY OBJECTIVE / GOALS OF THE PROJECT

PRIMARY OBJECTIVE / GOALS OF PROJECT



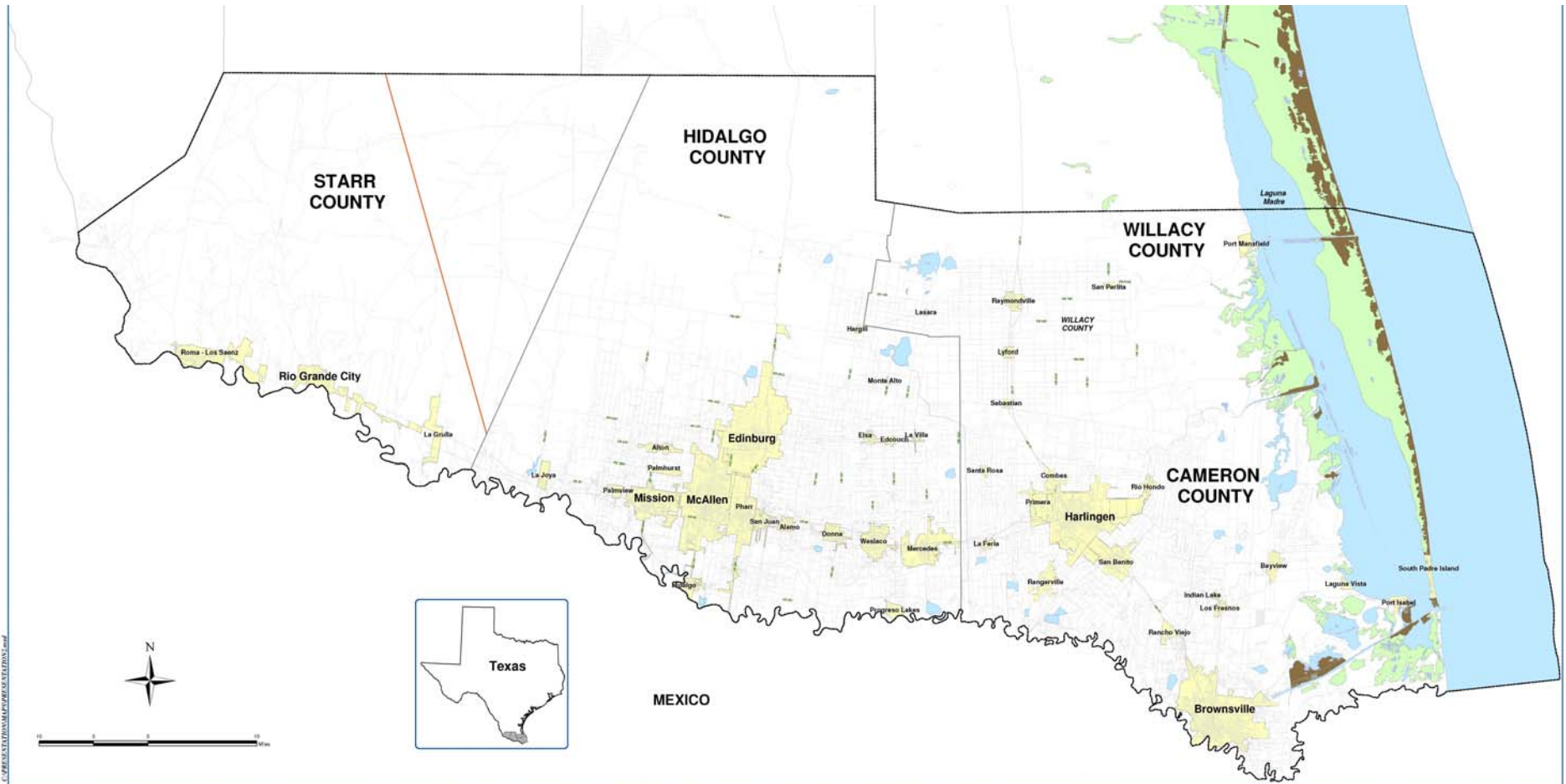
- **LRGVDC obtained a grant from the Economic Development Administration (EDA).**
- **Primary objective is to develop a regional master Plan to ensure economic growth and economic recovery following natural disasters.**
- **PLAN TITLE “*Regional Economic Adjustment Plan for Building Disaster-Resilient Communities in the Lower Rio Grande Valley*” (LRGV Regional EAP).**

PRIMARY OBJECTIVE / GOALS OF PROJECT



Project Study Area

❖ *Cameron, Willacy, Hidalgo, and part of Starr County.*

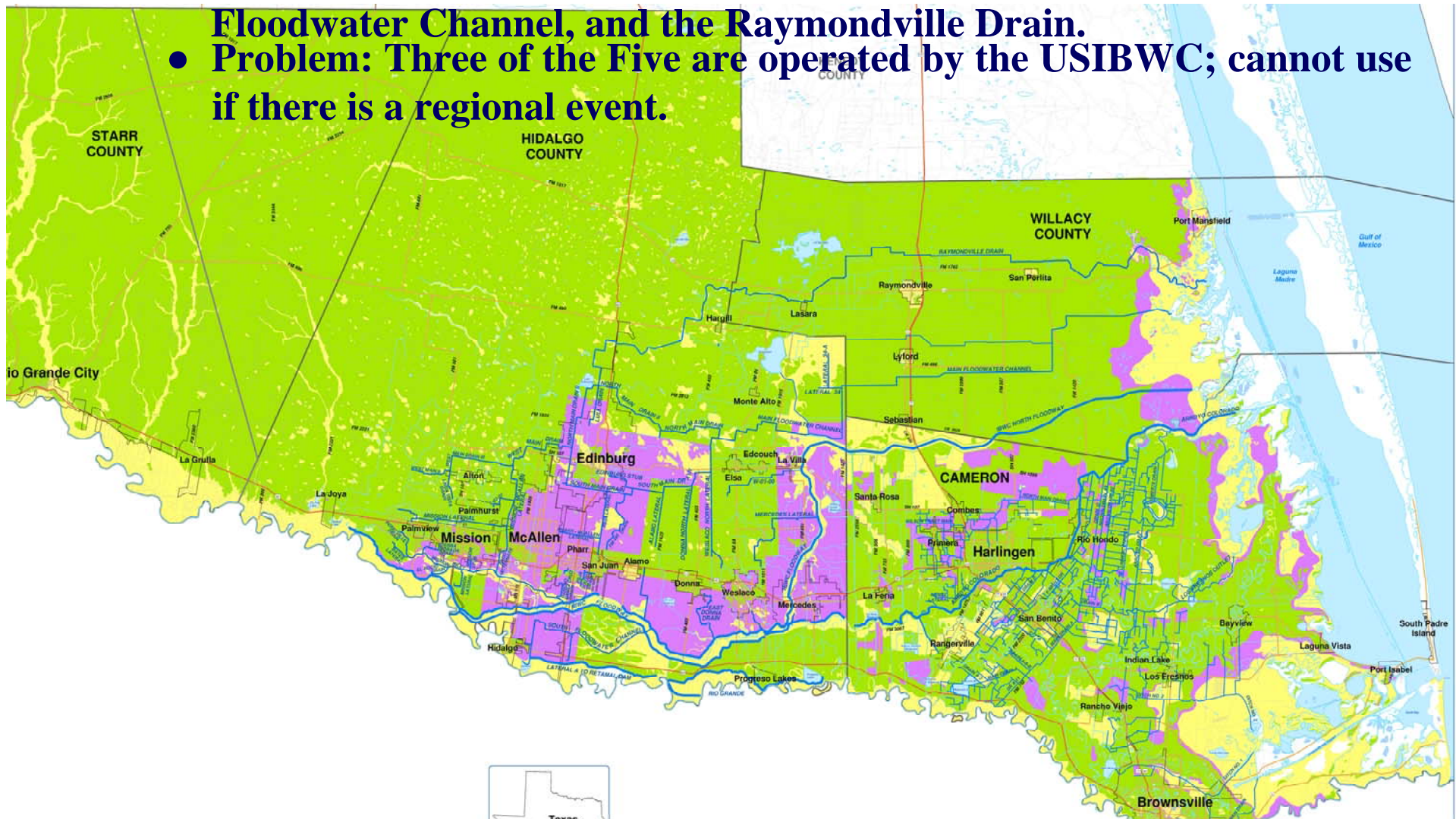


PRIMARY OBJECTIVE / GOALS OF PROJECT



Project Study Area

- Five major outfalls to the Laguna Madre.
- River, Arroyo Colorado Floodway, North Floodway, Main Floodwater Channel, and the Raymondville Drain.
- Problem: Three of the Five are operated by the USIBWC; cannot use if there is a regional event.



PRIMARY OBJECTIVE / GOALS OF PROJECT



■ Goals of the Project:

- Collect data to map, evaluate, and integrate into a GIS inventory / database.
- Evaluate the data for existing and future conditions.
- Develop a “big picture” plan that identifies contributing flow nodes, major outfalls, and known flooding problems.
- Identify and evaluate major assets and revenue generators.
- Identify projects and needed improvements critical to the region’s economic base.
- Develop a Regional CIP and Implementation Plan.

PROJECT TEAM



CONSULTANTS

- **S&B Infrastructure, Ltd.**
- **Olivarri & Associates, Inc.**
- **L&G Engineering, Inc.**
- **Guzman & Munoz Engineering and Surveying, Inc.**
- **TEDSI Infrastructure Group**
- **Jim Riggan, Rigcatco Consulting, Inc.**
- **Civil Systems Engineering, Inc.**



“Regional Economic Adjustment Plan for Building Disaster Resilient Communities”

EDA Grant Number 08-79-04390



PROJECT APPROACH / WORK PLAN

PROJECT APPROACH / WORK PLAN



PART I - PUBLIC INVOLVEMENT, GOVERNMENT/AGENCY COORDINATION, AND STAKEHOLDER COLLABORATION

❖ *Develop and coordinate a regionally-based collaborative effort by bringing together key stake holders (cities, counties, economic development organizations, private sector, irrigation and drainage districts, and state and federal agencies) for the purpose of developing regional strategies to restore, replace, and expand economic activity in the Region.*

Note: This element is to be performed throughout project development; from data collection thru plan submittal.

There are three goals.....

PROJECT APPROACH / WORK PLAN



PART I - PUBLIC INVOLVEMENT, GOVERNMENT/AGENCY COORDINATION, AND STAKEHOLDER COLLABORATION

❖ *Develop and coordinate a regionally-based collaborative effort by bringing together key stake holders (cities, counties, economic development organizations, private sector, irrigation and drainage districts, and state and federal agencies) for the purpose of developing regional strategies to restore, replace, and expand economic activity in the Region.*

Goal 1: Ensure Multi-Jurisdictional Cooperation with Local, State, and Federal Governments / Agencies.

This will be accomplished thru:

Public Officials (Elected and Appointed) / Agencies Coordination

- Develop Steering Committee;
- Develop Technical Committee; and,
- Coordination / meetings with State / Federal Agencies.

PROJECT APPROACH / WORK PLAN



PART I - PUBLIC INVOLVEMENT, GOVERNMENT/AGENCY COORDINATION, AND STAKEHOLDER COLLABORATION

❖ *Develop and coordinate a regionally-based collaborative effort by bringing together key stake holders (cities, counties, economic development organizations, private sector, irrigation and drainage districts, and state and federal agencies) for the purpose of developing regional strategies to restore, replace, and expand economic activity in the Region.*

Goal 2: Incorporate a Collaborative Effort with the Public and Stakeholders.

This will be accomplished thru:

Public / Stakeholder Participation & Outreach

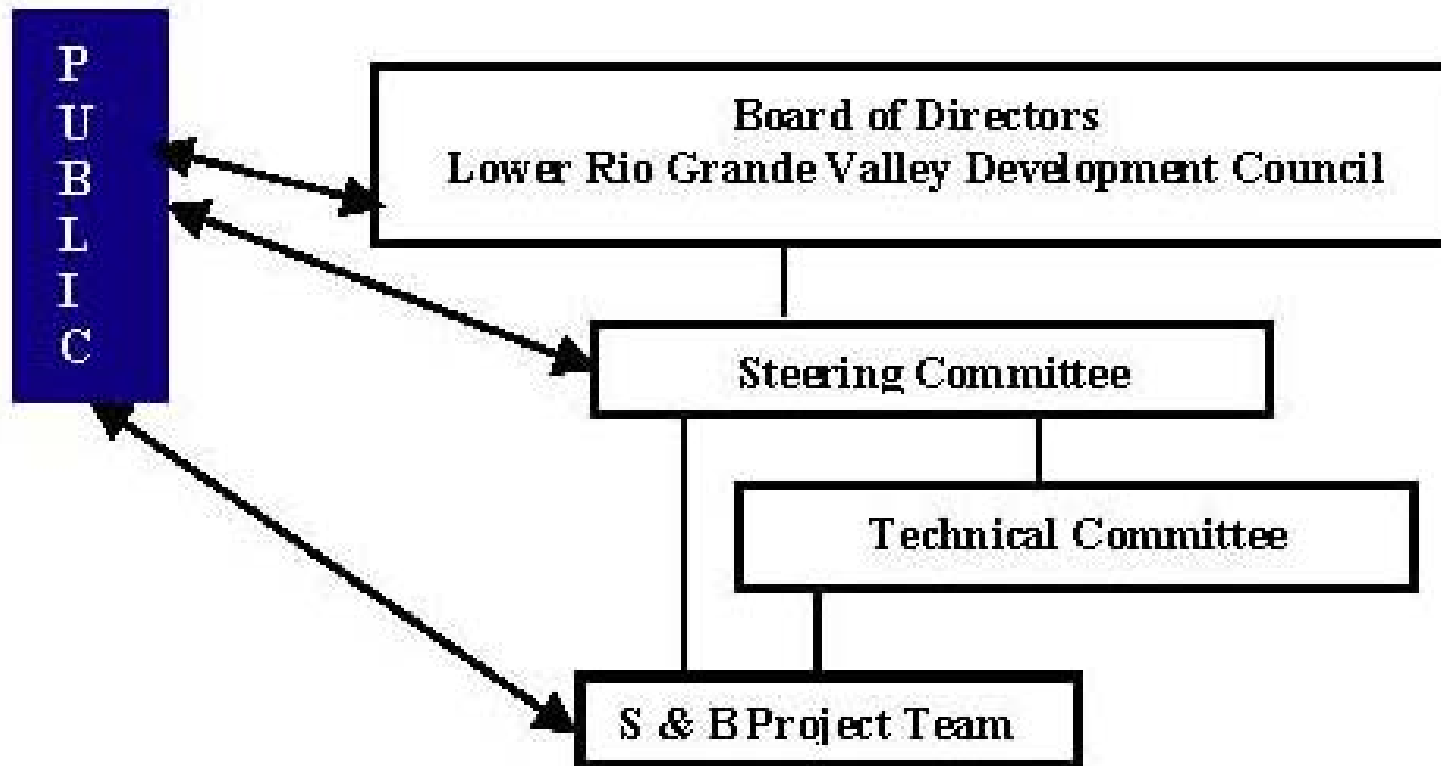
- Develop / implement outreach strategies;
- Perform stakeholder interviews / assessments;
- Hold formal public forums; and,
- Create project website and newsletters.

PROJECT APPROACH / WORK PLAN



PART I - PUBLIC INVOLVEMENT, GOVERNMENT/AGENCY COORDINATION, AND STAKEHOLDER COLLABORATION

• Role of the Steering and Technical Committee



PROJECT APPROACH / WORK PLAN



PART I - PUBLIC INVOLVEMENT, GOVERNMENT/AGENCY COORDINATION, AND STAKEHOLDER COLLABORATION

Steering Committee - Responsibilities

- Assist with public outreach;
- Provide input regarding analysis and prioritizing of projects;
- Provide input regarding development of potential projects; and,
- Provide guidance in the overall development of the plan.

Committee Make-up

- Hidalgo County – 11 members;
- Cameron County – 9 members;
- Willacy County – 7 members; and,
- Starr County – 2 members

PROJECT APPROACH / WORK PLAN



STEERING COMMITTEE				
Member Information				
County	Allotment	Name	Title / Organization / Affiliation	
Hidalgo County	11 members			
		Eddy Gonzalez	Mayor, Pro-Tem	City of Edcouch
		Tito Palacios	Commissioner	County Precinct #2
		Domingo Villareal	HCP#3 Coordinator	County Precinct #3
		Joseph Palacios	Commissioner-Elect	County Precinct #4
		Godfrey Garza	District Manager	HCDD#1
		Pilar Rodriguez, PE	Asst City Manager	City of McAllen
		Alma Garza	Commissioner	City of Edinburg
		Leo "Polo" Palacios	Mayor	City of Pharr
		Julio Cerda, PE	City Manager	City of Mission
		Troy Allen	General Manager	Delta Lake Irrig Dist
		Sonny Hinojosa	General Manager	Irrigation District #2
Cameron County	9 members			
		Robert Pinkerton	Mayor	South Padre Island
		Eddy Hernandez	Dir of Customer & Inf Services	Brownsville Public Utility
		David A. Garza	Commissioner	County Precinct #3
		Steve Brewer	Mayor	City of La Feria
		Dan Serna	Public Works Director	City of Harlingen
		Jeff Johnston	Asst City Manager	City of Brownsville
		Wayne Halbert	General Manager	Harlingen Irrig District
		Eddie Campirano	Port Director and CEO	Port Of Brownsville
		Tom Hushen	Past Chief Emergency Officer	Cameron County
Willacy County	7 members			
		Tony Nieto	Plant Manager	Kenaf Industries
		Jerry Taylor	General Manager	El Sauz Ranch
		Fred Serrato	Commissioner	County Precinct #3
		Aurelio Guerra	Commissioner	County Precinct #4
		Eleazar "Yogi" Garcia	City Manager	City of Raymondville
		Orlando Correa	Mayor	City of Raymondville
		Michael G. Wilson	Port Director	Willacy County Navigation District -
Starr County	2 members			
		Abel Gonzalez	Commissioner	County Precinct #4
		Rose Benavidez	Executive Director	Starr County Ind Found

PROJECT APPROACH / WORK PLAN



PART I - PUBLIC INVOLVEMENT, GOVERNMENT/AGENCY COORDINATION, AND STAKEHOLDER COLLABORATION

Technical Committee - Responsibilities

- Assist with technical aspects of project;
- Review / provide input of technical aspects of identified projects;
- Provide technical guidance in prioritization criteria; and,
- Provide technical guidance in the overall development of the plan.

Committee Make-up

- Hidalgo County – 7 members;
- Cameron County – 6 members;
- Willacy County – 4 members; and,
- Starr County – 1 members

PROJECT APPROACH / WORK PLAN



TECHNICAL COMMITTEE				
Member Information				
County	Allotment	Name	Organization / Affiliation	
Hidalgo County	7 members			
		Jo Jo White	General Manager	HCCID#9
		Ramiro Guitierrez, PE	President	R.Gutierrez Engineering Cor
		Javier Hinojosa, PE	President	Javier Hinojosa Engineering
		Raul Sestin, PE	Planning Engineer	Hidalgo County Planning
		Noe Saldivar, PE	Technical Engineer	HCDD#1
		Raul Lozano	Chief Administrator	County Precinct #1
		Richard Garcia	City Manager	City of Mercedes
Cameron County	6 members			
		James L. Holdar, PE	Professional Engineer	
		Louis Ara	Road/Bridge Superintendent	County Precinct #3
		Jack L. Brown, PE	President	Brown Leal & Associates
		Sonia Lambert	General Manager	C C Irrig District #2
		Alan Moore, PE	General Manager	Cameron Co Drain Dist 5
		Bobby Sparks	Landowner - agricultural / farm	SRS Farms
Willacy County	3 members			
		Freddie Nieto	Wildlife Manager	El Sauz Ranch
		Gary Palousek	Board Member	WCDD#2
		Paul Greenhill	General Manager	WCDD#1
		Juan Pena	District Conservationist	Lyford - NRCS
Starr County	1 member			
		Eloy Vera, PE	County Judge	Starr County

PROJECT APPROACH / WORK PLAN



1. Public Meetings

- Project Workshop;
- One round of meetings – one held in each County; and,
- Second round – one held in each County Precinct.

2. Publications

- Project Website www.lrgv-regional-eap.com; and,
- Quarterly Newsletters.

4. Other Forums for Data Gathering / Input

- Interviews with Public Officials unable to attend meetings; and,
- Focus Group (4) Meetings

PROJECT APPROACH / WORK PLAN



PART I - PUBLIC INVOLVEMENT, GOVERNMENT/AGENCY COORDINATION, AND STAKEHOLDER COLLABORATION

❖ *Develop and coordinate a regionally-based collaborative effort by bringing together key stake holders (cities, counties, economic development organizations, private sector, irrigation and drainage districts, and state and federal agencies) for the purpose of developing regional strategies to restore, replace, and expand economic activity in the Region.*

Goal 3: Identify / Define thru Consensus-Building the Top Three Drainage Issues that Damage the Tax / Revenue Base for each Community.

This will be accomplished thru:

Identification of Drainage / Flooding Issues

- Visit and gather data from each entity within Study Area;
- Review any existing plans and hold forums to assess resources / needs;
- Develop and facilitate Focus Groups for consensus; and,
- Compile entities list of top three projects.

PROJECT APPROACH / WORK PLAN



PART II - GIS DATA COLLECTION

1. **Compile, Review, and Incorporate Historical Documents**
2. **Define Existing Conditions thru GIS Data Collection**
 - Collect and prepare base mapping;
 - Obtain existing planimetric and topographic information (supplement as required thru additional surveys);
 - Review and/or generate other relevant spatial data (streets, roads, utility data, digital aerials, land use, floodplains, soils, environmental, etc.);
 - Prepare drainage system inventories;
 - Identify environmental constraints;
 - Identify major assets and revenue generators; and,
 - Identify critical roadway infrastructure.

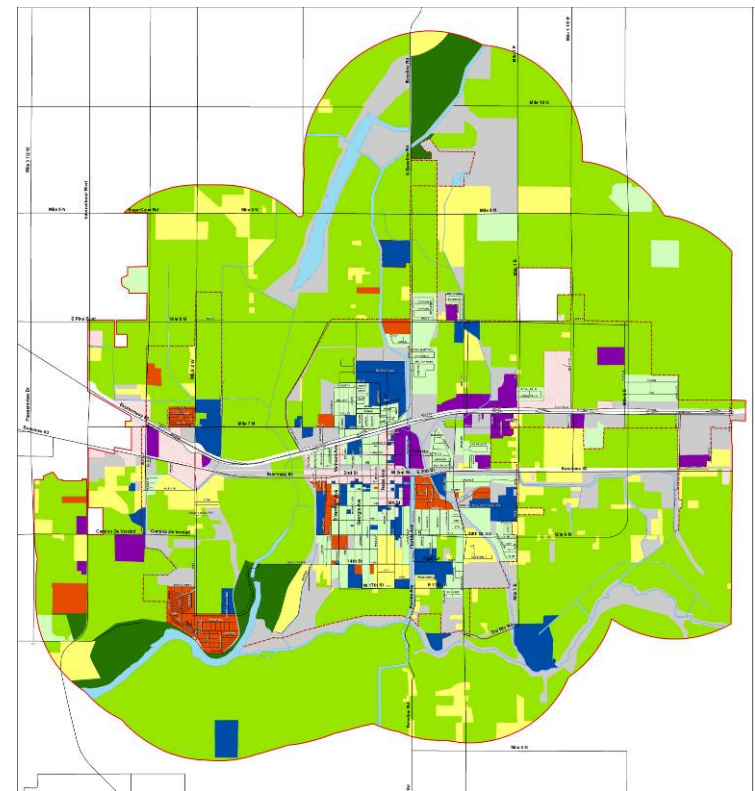
PROJECT APPROACH / WORK PLAN



PART III– EVALUATION OF EXISTING AND FUTURE CONDITIONS

1. Obtain / Review Land Use Characterization Studies

- Generate GIS-based land use maps;
- Illustrate existing and future land use;
- Future boundaries will be based on existing annexation plans; and,
- Future land use will be based on full implementation of development.



Example Land Use Characterization Mapping – City of Mercedes

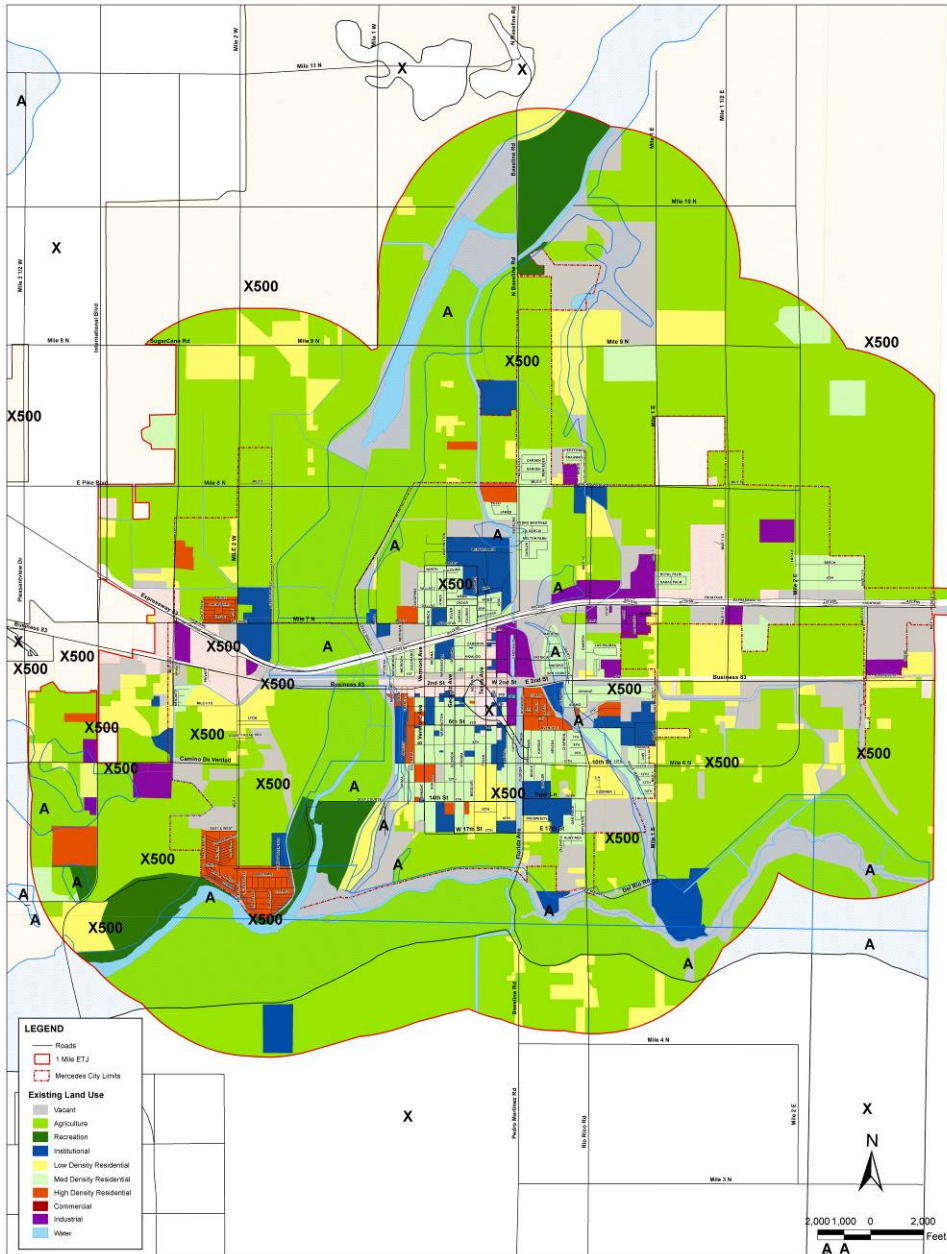
Existing Conditions, Including FEMA

LEGEND

- Roads
- 1 Mile ETJ
- Mercedes City Limits

Existing Land Use

- Vacant
- Agriculture
- Recreation
- Institutional
- Low Density Residential
- Med Density Residential
- High Density Residential
- Commercial
- Industrial
- Water



Example Land Use Characterization Mapping – City of Merced Future Conditions, Including FEMA

LEGEND

— Roads

□ 1 Mile ETJ

□ Merced City Limits

Future Land Use

■ HDR/Commercial

■ Commercial/Industrial

■ Downtown Mixed Use

■ Commercial

■ Low Density Residential

■ Med Density Residential

■ Agriculture/Rural

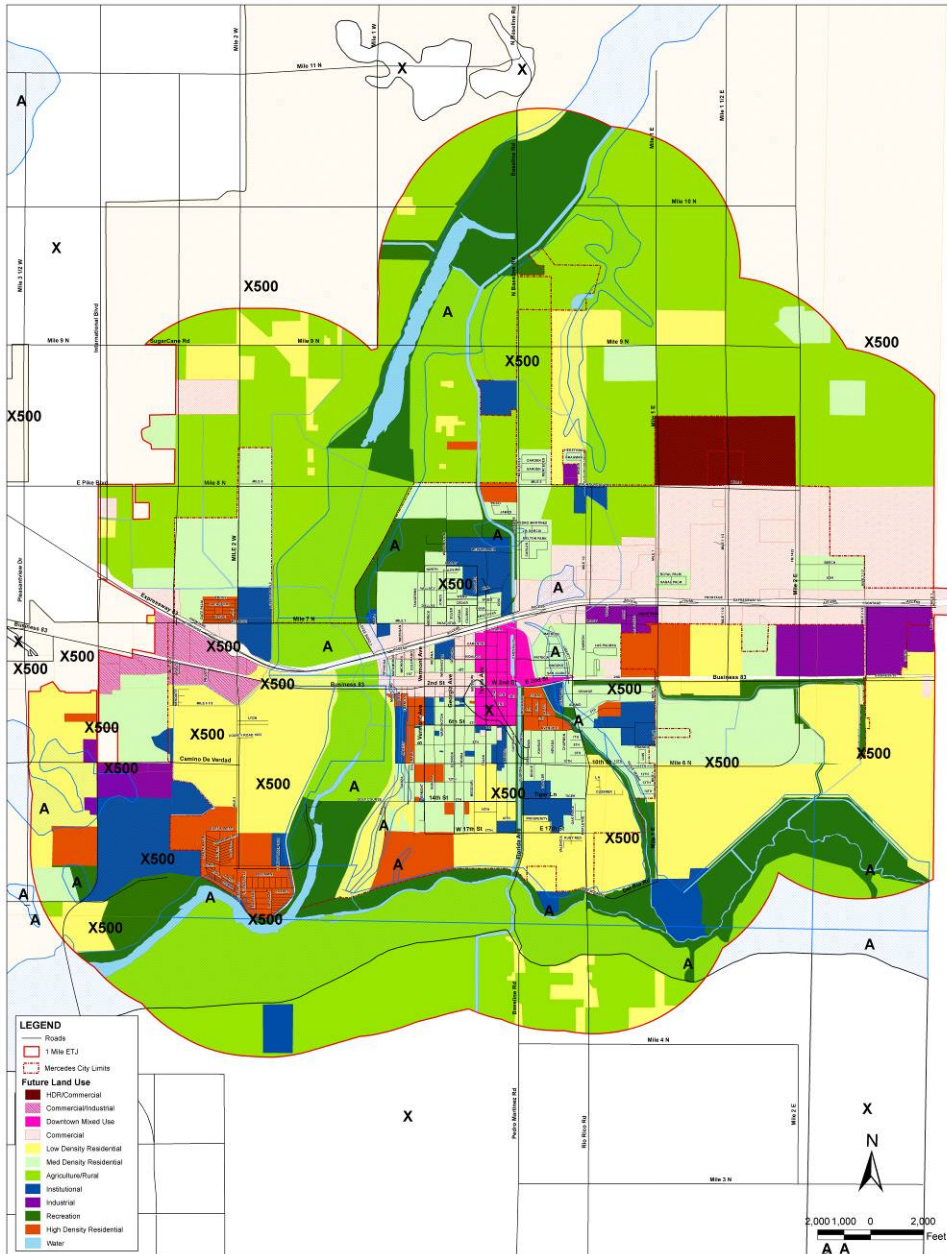
■ Institutional

■ Industrial

■ Recreation

■ High Density Residential

■ Water



PROJECT APPROACH / WORK PLAN



PART III– EVALUATION OF EXISTING AND FUTURE CONDITIONS, CONTINUED.

2. Perform Drainage System Condition Surveys

- Evaluate structural and operational conditions of major components of existing drainage systems; and,
- Categorize and rate structural and maintenance deficiencies.

3. Evaluation of Environmental Constraints

- Limited environmental site investigation; and,
- Identification of permitting requirements (Section 404 CWA, Section 10 Rivers and Harbors, cultural resources, historical preservation, and protected species).

PROJECT APPROACH / WORK PLAN



PART III– EVALUATION OF EXISTING AND FUTURE CONDITIONS, CONTINUED.

4. Analysis of Drainage Systems

- Establish / confirm drainage design criteria as applicable and required by various agencies;
- Review and analyze existing drainage systems;
- Review and analyze existing outfall drainage systems;
- Identify existing drainage system deficiencies; and,
- Formulate drainage improvement alternatives through cost-benefit analysis.

5. FEMA

- Recommend physical map revisions (PMR) and letters of map revisions (LOMR), as required.

PROJECT APPROACH / WORK PLAN



PART IV– IMPLEMENTATION THRU REGIONAL CAPITAL IMPROVEMENT PROGRAM

1. Prioritize / Rank Projects

- Projects that protect human life and access to emergency services;
- Projects that sustain existing infrastructure; and,
- Projects that promote future infrastructure and tax-base revenue, ensuring the most regional economic benefits.

2. Review Cost Estimates and Prepare Final Budget

3. Identify Funding Sources

- Grants and Loans (FEMA Hazard Mitigation Grant Program, Post-Disaster Mitigation Grant Program);
- Drainage Impact Fees and Water Re-use;
- State (TWDB, ORCA) and Federal Programs (WRDA, FEMA); and,
- Prepare timeline of funding availability.

PROJECT APPROACH / WORK PLAN



PART IV– IMPLEMENTATION THRU REGIONAL CAPITAL IMPROVEMENT PROGRAM, CONTINUED.

4. Prepare CIP Schedule

- Based on funding availability.

5. Implement Preventive Maintenance

- Develop Operation and Maintenance Plan; and,
- Incorporate periodic analysis, inspection, and maintenance.



PROJECT STATUS – WHERE ARE WE AS OF TODAY?

PROJECT STATUS – *Where are we as of today?*



- **Notice-to-Proceed: March 15, 2010**
- **Approximately 7 months into our 16-month Schedule**
 - **Draft CIP / Plan is due in May 2011; Final in June 2011.**
- **Status of Major Elements**
 - **GIS / Data Collection --- approximately 90% complete**
 - **Evaluation of Existing Conditions; have started on the following:**
 - (1) **Land Use Characterization Studies**
 - (2) **Drainage System Inventories**
 - (3) **Entity Identification**

PROJECT STATUS – *Where are we as of today?*



- **Entity Distribution - To-Date have identified 187 Entities within the Project Study Area**

	Cameron	Hidalgo	Willacy	Starr
City-Inc	18	23	3	0
City-UnInc	31	37	11	4
Precincts	4	4	4	3
Drainage	3	1	2	1
Irrigation	7	8	1	0
Navigation	3	0	1	0
Water	0	4	0	0
EDC	4	7	1	2
Total	70	84	23	10
	187			
	37%	45%	12%	5%

ENTITY DISTRIBUTION / TEAM ASSIGNMENTS



• Cameron County

Cameron County	Incorporated	Cities / Communities Unincorporated	Drainage Districts	Irrigation Districts	Navigation Districts	Economic Development Corporations
Precinct 1 Sophia C. Benavides	Bayview Brownsville	Arroyo City Precinct 3 Arroyo Colorado Estates	Cameron County Drainage District #1 Cameron County Drainage District #3 Cameron County Drainage District #4	Adams Gardens Irrigation District #19 Bayview Irrigation District #11 Brownsville Irrigation District (Brownsville) Cameron County Irrigation District #2 (San Benito) Harlingen Irrigation District #1 (Harlingen) La Feria Irrigation District Cameron County #3 (La Feria) United Irrigation District of Cameron County (United)	Brownsville Navigation District Port Isabel-San Benito Navigation District Harlingen Navigation District	Harlingen Economic Development Corporation Brownsville Economic Development Council Port Isabel Economic Development Corporation South Padre Economic Development Corporation
Precinct 2 John wood	Combes Harlingen	Precinct 4 Arroyo Gardens – La Tina Ranch Precinct 1, 4 Bixby				
Precinct 3 David A. Garza	Indian Lake La Feria	Precinct 4 Blue Town-Iglesia Antigua Precinct 2 Cameron Park				
Precinct 4 Edna Tamayo	Laguna Vista Los Fresnos Los Indios Palm Valley Port Isabel Primera Rancho Vieja Rangerville Rio Hondo San Benito Santa Rosa South Padre Island	Precinct 2, 3 Chula Vista-Orason Precinct 2 Del Mar Heights Precinct 3 El Camino Angosto Precinct 4 Encantada-Ranchito El Calaboz Precinct 4 Grand Acres Precinct 3 Green Valley Farms Precinct 4 La Feria North Precinct 4 La Paloma Precinct 4 Lago Precinct 1, 3 Laguna Heights Precinct 3 Las Palmas-Juarez Precinct 4 Lasana Precinct 3 Laureles Precinct 4 Lozano Precinct 2 Olmito Precinct 4 Ratamosa Precinct 1 Reid Hope King Precinct 2, 4 San Pedro Precinct 4 Santa Maria Precinct 4 Solis Precinct 1 South Point Precinct 4 Tierra Bonita Precinct 1 Villa Pancho Precinct 3, 4 Villa del Sol Precinct 4 Yznaga		L&G TEDSI S&B		
4	18	31	3	7	3	4
70						
L&G = 2 TEDSI = 2	CSEI = 4 TEDSI = 14	L&G = 22 TEDSI = 9	TEDSI = 3	TEDSI = 7	S&B = 3	TEDSI = 4



“Regional Economic Adjustment Plan for Building Disaster Resilient Communities”

EDA Grant Number 08-79-04390

ENTITY DISTRIBUTION / TEAM ASSIGNMENTS



• Hidalgo County

Hidalgo County	Cities / Communities		Drainage Districts	Irrigation Districts	Water Districts	Navigation Districts	Economic Development Corporations
	Incorporated	Unincorporated					
Precinct 1	Alamo	Precinct 3 Abram-Perezville	Hidalgo County Drainage District #1	Donna Irrigation District Hidalgo County #1 (Donna)	Valley Acres Water District		Alamo Economic Development Corporation
AC Cuellar	Alton	Precinct 3 Alton North		Engelman Irrigation District	Military Highway Water Supply		Development Corporation of Mercedes
Precinct 2	Donna	Precinct 4 Cesar Chavez		Hidalgo County Irrigation District #1 (Edinburg)	Hidalgo County Municipal Utility District	Edinburg Economic Development Corporation	
Hector 'Tito' Palacios	Edcouch	Precinct 3 Citrus City		Hidalgo County Irrigation District #2	AGUA S.U.D.	McAllen Economic Development Corporation	
Precinct 3	Edinburg	Precinct 3 Cuevitas		Hidalgo County Irrigation District #6		Mission Economic Development Authority	
Joe Flores	Elsa	Precinct 3 Doffing		Hidalgo and Cameron Counties Irrigation District #9 (Mercedes)		Pharr Economic Development Corporation	
Precinct 4	Granjeno	Precinct 4 Doolittle		Santa Cruz Irrigation District #15		San Juan Economic Development Corporation	
Oscar Garza, Jr.	Hidalgo	Precinct 3 El Gato		Hidalgo County Irrigation District #16			
	La Joya	Precinct 4 Faysville					
	La Villa	Precinct 3 Hargill					
	McAllen	Precinct 3 Havana					
	Mercedes	Precinct 1 Heidelberg					
	Mission	Precinct 1 Indian Hills					
	Palmhurst	Precinct 1, 4 La Blanca					
	Palmview	Precinct 3 La Homa					
	Penitas	Precinct 1 Laguna Seca					
	Pharr	Precinct 1 Llano Grande					
	Progreso	Precinct 2, 4 Lopezville					
	Progreso Lakes	Precinct 3 Los Ebanos					
	San Juan	Precinct 1, 2, 3, 4 McCook					
	Sullivan City	Precinct 1 Midway North					
	Weslaco	Precinct 1 Midway South					
		Precinct 1 Mila Doce					
		Precinct 1 Monte Alto					
		Precinct 4 Muniz					
		Precinct 2, 4 Nurillo					
		Precinct 1 Olivarez					
		Precinct 3 Palmview South					
		Precinct 1 Relampago					
		Precinct 2 Runn					
		Precinct 4 San Carlos					
		Precinct 4 San Manuel-Linn					
		Precinct 1 Scissors					
		Precinct 3 Sharyland					
		Precinct 1, 2 South Alamo					
		Precinct 4 Val Verde					
		Precinct 1 Villa Verde					

L&G
G&M
S&B

4	23	37	1	8	4	7
84						

L&G = 2 G&M = 2 S&B = 37 S&B = 1 S&B = 8 S&B = 4 S&B = 7
 S&B = 2 S&B = 21 S&B = 1 S&B = 8 S&B = 4 S&B = 7



“Regional Economic Adjustment Plan for Building Disaster Resilient Communities”
 EDA Grant Number 08-79-04390

ENTITY DISTRIBUTION / TEAM ASSIGNMENTS



• Willacy County

Willacy County	Cities / Communities					
	Incorporated	Unincorporated	Drainage Districts	Irrigation Districts	Navigation Districts	Economic Development Corporations
Precinct 1 Eliberto "Beto" Guerra	Lyford	Precinct 3 Bausell and Ellis	Willacy County Drainage District #1	Delta Lake Irrigation District (Delta la)	Willacy County Navigation District	Raymondville EDC
Precinct 2 Eddie Chapa	Raymondville	Precinct 1 Lasara	Willacy County Drainage District #2			
Precinct 3 Fred Serrato	San Perlita	Precinct 1 Los Angeles Subdivision			G&M	
Precinct 4 Aurelio 'Keeter' Guerra, Jr		Precinct 4 Lyford South			TEDSI	
		Precinct 2 Port Mansfield				
		Precinct 1 Ranchette Estates				
		Precinct 4 Santa Monica				
		Precinct 4 Sebastian				
		Precinct 3 Willamar				
		Precinct 1 Yturra				
		Precinct 4 Zapata Ranch				

4	3	11	2	1	1	1
23						

TEDSI = 4

G&M = 3

G&M = 11

TEDSI = 2

TEDSI = 1

TEDSI = 1

TEDSI = 1



“Regional Economic Adjustment Plan for Building Disaster Resilient Communities”

EDA Grant Number 08-79-04390

ENTITY DISTRIBUTION / TEAM ASSIGNMENTS



● Starr County

Starr County	Cities / Communities		Drainage Districts	Economic Development Corporations
	Incorporated	Unincorporated		
Precinct 1 Jaime M. Alvarez			New District	Rio Grande City EDC Starr County Industrial Foundation
Precinct 3 Eloy Garza				
Precinct 4 Abel Gonzalez, Jr.				
		Precinct 4 San Isidro		
		Precinct 4 La Gloria Precinct 3 La Reforma		
		Precinct 3 Santa Elena		
3	0	4	1	2
10				
S&B = 3		S&B = 4		S&B = 2

