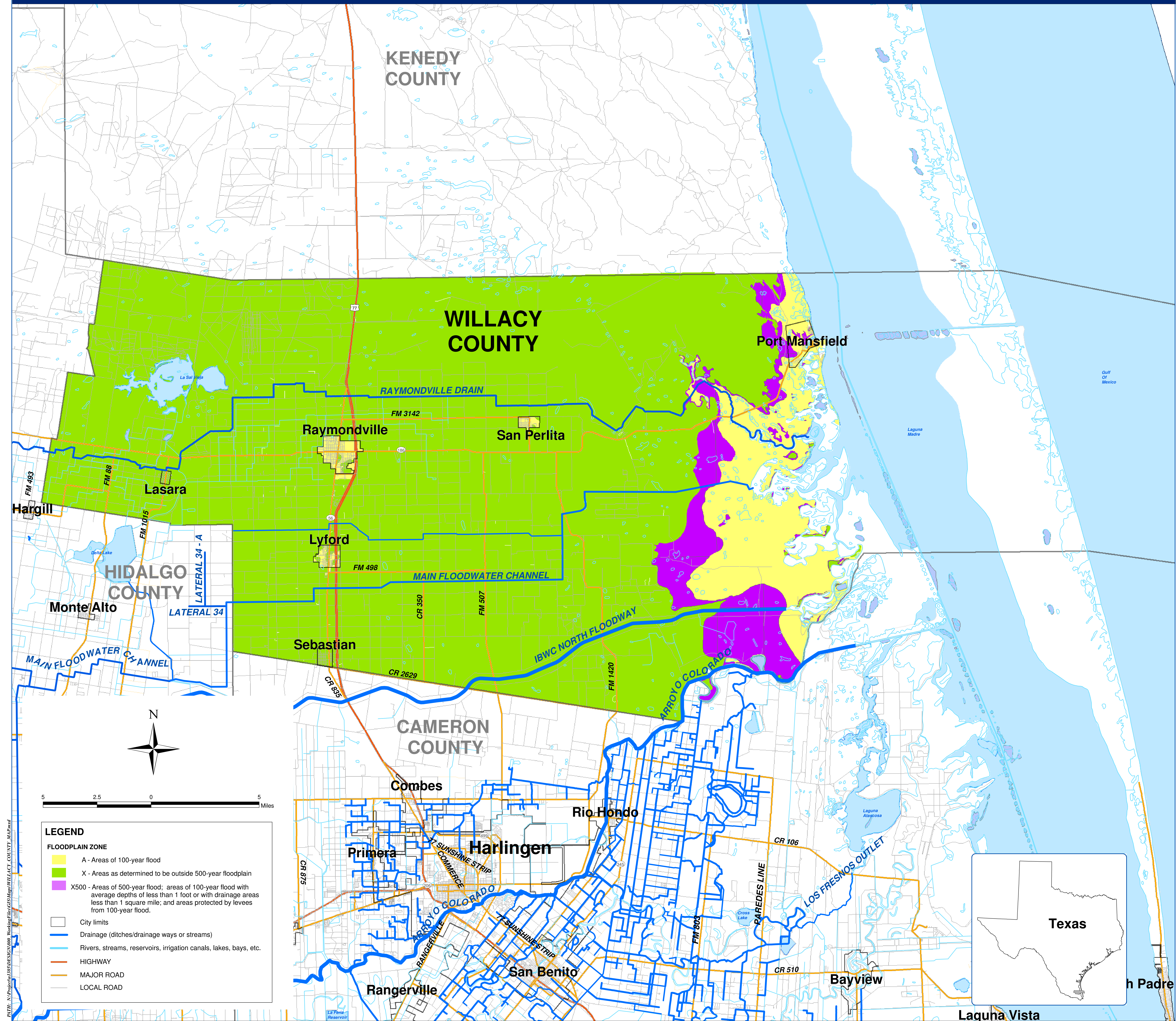


LOWER RIO GRANDE VALLEY WILLACY COUNTY - FLOODPLAIN MAP



LEGEND

FLOODPLAIN ZONE

- A - Areas of 100-year flood
- X - Areas as determined to be outside 500-year floodplain
- X500 - Areas of 500-year flood; areas of 100-year flood with average depths of less than 1 foot or with drainage areas less than 1 square mile; and areas protected by levees from 100-year flood.

- City limits
- Drainage (ditches/drainage ways or streams)
- Rivers, streams, reservoirs, irrigation canals, lakes, bays, etc.
- HIGHWAY
- MAJOR ROAD
- LOCAL ROAD

